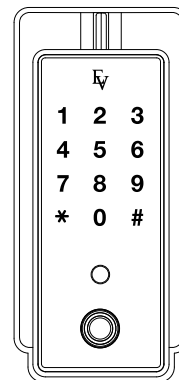


EVERLOCK

User's manual

BDS-232



- ▶ A touch sensor type of ultra-slim and noble design
- ▶ Digital identification by momentary contact of i-Button.
- ▶ Fire detection alarm sounds and automatic release of the locking device
- ▶ Automatic locking function
- ▶ Antitheft and double locking
- ▶ Override emergency cylinder keys

Warning: In case of emergency, you should be fully aware of the method for using the manual shutting device.

Please, get a copy of product warranty from the installer.

If the product warranty is not clearly specified, then you may be exposed to some disadvantages in case of needs for A/S.

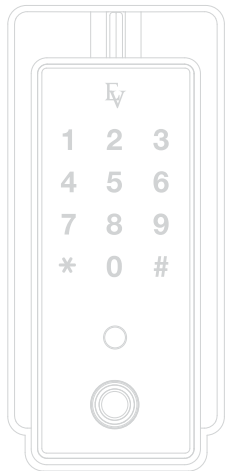
※ This product's performance and design are subject to change without prior notice for the purpose of quality improvement.

■ Summary of the methods for using the product

Functions	How to operate it			Remarks
	Entering the menu	Detailed procedures	Ending the menu	
General function				
Register i-Button	[SET]	Contact i-Button 1 + Contact i-Button 2 + ...	[SET]	You can register up to Ten(10)
Delete i-Button		If you re-register it, the existing i-Button information will be deleted.		
Register password	[SET]	Password(4~14 digits) + #		
Open the door from the outside		Touch the numerical pad + password + #		Password type
		Contact i-Button		i-Button type
Mandatory functions				
Battery low alarm		You will hear the 'tilling' sound when opening or closing the door.		
Impulsive intrusion alarm function		Alarm sounds will be on for one(1) minutes in case of impulsive intrusion or damaged systems.		
Forced locking of the system		If you enter wrong password or i-Button information for five times, the system will be halted for three minutes.		
Additional functions, very useful for you				
Initialization	[SET]	Press [SET] for 3 seconds + 1 2 3 + #	-	
Volume control	[SET]	Select one number from 0 to 2 + #	-	
Automatic/manual locking	[SET]	* + #		Automatic◀▶Manual mode
Antitheft function setting	Press * for 3 seconds	Password + #	-	Password type
	Press * for 3 seconds	Contact i-Button	-	i-Button type
Double locking		Shifts the internal double locking switch to locked mode.(show red color)		

■ Table of contents





1. Cautions for use	4
2. Product features	6
3. Product specifications and components	7
4. Name of each part	8
5. Using the general function	9
1) Register i-Button 2) Register and change password 3) Open the door from the outside using password	
4) Open the door from the outside using an i-Button 5) Open the door from the inside	
6. Mandatory functions of the equipment	13
1) Replace batteries 2) How to use the emergency battery 3) Intrusion/damage alarm function	
4) Fire detection function 5) Forced locking of the system	
7. Additional information useful for you	16
1) Auto/manual locking setting 2) Anti-theft function(Outdoor forced locking)	
3) Double locking function(Indoor forced locking) 4) Volume control 5) Initialization	
8. Contact us	20

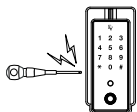


1. Cautions for use

- ▶ Get a copy of product warranty with accurate specifications from the installer.
- ▶ Please, ask the installer to teach you how to use the product.
- ▶ Be fully familiarized with the main functions.
- ▶ This product is designed to maintain its locking condition despite 30,000V electrical shocks.

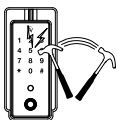
This information aims to maintain the safety of our users and prevent any damages on property or inconvenience. Read it carefully for your correct use of the product.

-  **Warning** If this sign is violated, a user may experience severe injury or even die.
-  **Caution** If this sign is violated, it may cause injury to the user or property damages.
-  **Attention** This sign asks for you to pay attention.
-  **Prohibited** This sign signifies prohibited actions.



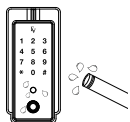
● Do not disassemble the product.

This product's inner area is designed in a precise and complex way. Do not disassemble it on your own. It may lead to serious malfunctions.



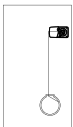
● Do not apply impacts to it.

It may cause malfunctions or defective operation.



● Do not spray water to the product. Do not install it in a humid place.

Everlock is not either water or vibration free. It may cause malfunctions due to short-circuits in the product.



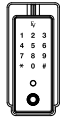
● If the door has a hole for milk delivery or any other type of hole, then please block it completely.

It is possible to manipulate the door lock through the hole and to make illegal entry.



- **Do not forget to replace the battery when necessary.**

When the low battery alarm or display is on, then please replace it with a new one within one week after that.



New
installation

- **If you move to another address and require new installation, please contact your installer.**

(Additional costs may accrue for new installation)



- **Please, pay close attention to your password at all times.**

Your password must set and changed periodically.



- **Do not use water, benzene or alcohol to clean the product.**

It may lead to malfunctions of the electronic product. You are advised to wipe it off gently with a dry cloth.



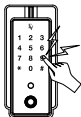
- **You must read the user's manual carefully to operate the product properly.**

Otherwise, it may lead to malfunctions or poor performance.



- **Do not approach flammable substance such as a lighter to the product.**

It may lead to malfunctions or poor performance.



- **Do not press the button too hard or apply excessive forces to manipulate the equipment.**

It may lead to malfunctions.

2. Product features

▶ **A touch sensor type of ultra-slim and noble design**

It does not require you any motion as to lift up the product's cover. To open the door, just gently touch your password on the pad.

▶ **Digital identification by momentary contact of i-Button**

▶ **Fire detection alarm sounds and automatic release of the locking device**

It includes the fire detection alarm function. If heat above 60°C or 140°F is detected, then the alarm sound will be generated and the doorlock will automatically release the locking function.

▶ **Automatic locking function**

It is automatically locked after you close the door. You will never leave your home without locking the door.

▶ **Antitheft and double locking**

If you set the double locking function when you are inside, then no one can open the door from the outside. To the contrary, if you set the antitheft function from the outside, an alarm sound will occur as they open the door from the inside.

▶ **Audio volume control**

In consideration of inconvenience with noises generated when Everlock is used, we allow you to freely select the desirable audio volume.

▶ **Override emergency cylinder keys**

User can use an override cylinder keys in case of a circuit trouble.

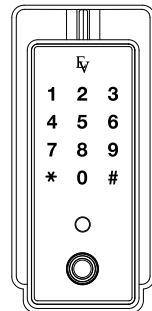
3. Product specifications and components

(1) Product specifications

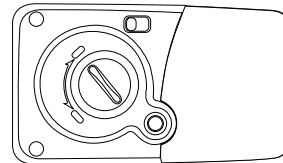
Classifications	Specifications		Remarks
Sizes	Inner device (mm)	90(W) × 157(H) × 37(D)	
	Outer device (mm)	70(W) × 150(H) × 19(D)	
Material	Inner device	Aluminum, Zinc, ABS	
	Outer device	Aluminum die casting	
Temperature of use	-20 ~ 55°C		
Voltage of use	Rated voltage 6V (4 units of 1.5V AA type alkaline batteries)		If used 10 times/day, then it can last for one year

※ The battery's life cycle may vary depending on temperatures, humidity, the number of use and the quality of the battery itself.

(2) Components



▶ Outer device



▶ Inner device



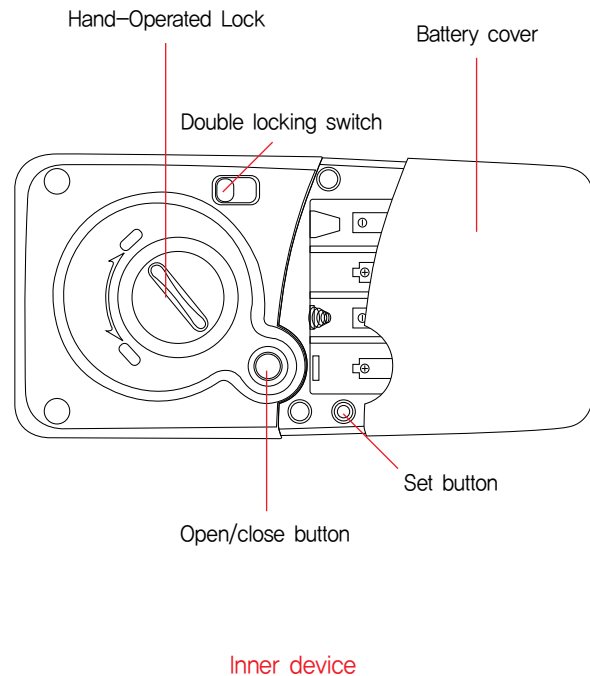
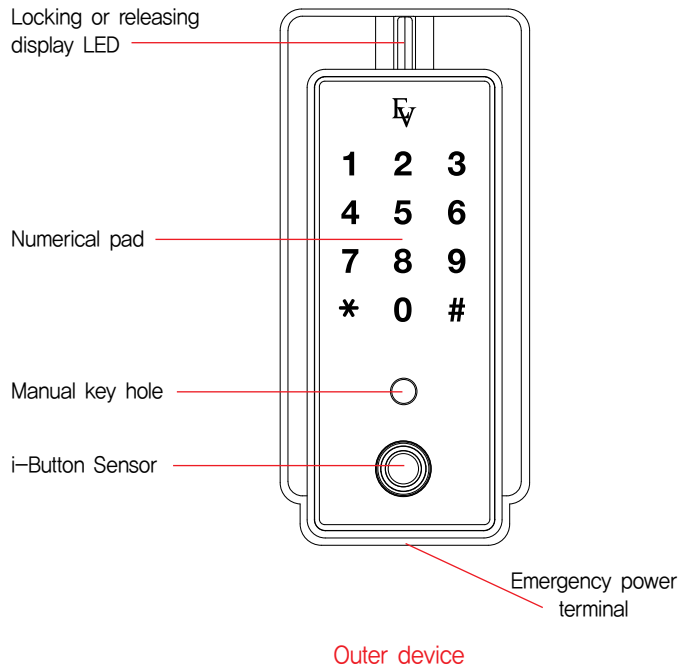
▶ 4 units of i-Button



- ▶ User's manual (including the product warranty) and installation diagram
- ▶ 4 units of AA batteries
- ▶ Screw envelopes
- ▶ Latch
- ▶ Two(2) units of emergency cylinder keys



4. Name of each part



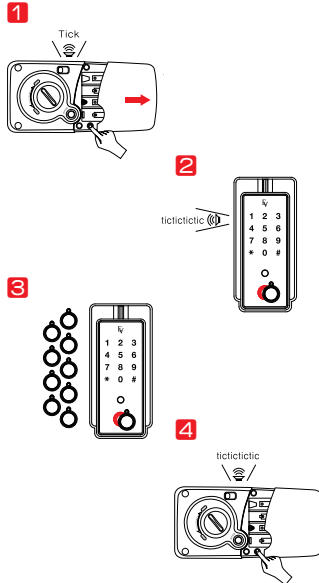
5. Using the general function

1) Register i-Button



Caution

- ▶ When registering i-Button or checking registration, the door may get closed accidentally. Please, make sure to completely open the door before proceeding.
- ▶ When you register your i-Button, all the previously registered i-Buttons will be deleted from the list. So, please, make sure to register all the i-Buttons again if you want to use them.



(1) Press the [SET] button(inner device) : Enter registration mode.

Open the battery cover of inner device, and press the [SET] button. Then, you will hear the 'ticking' sound and the numerical pad's lamp will be illuminated.

(2) i-Button contact (outdoor)

As you place the i-Button which should be registered on the i-Button sensor of the outer device, you will hear the 'tictictictic' sound and registration will be completed.

(3) Place contact all other i-Buttons on the sensor

All the i-Buttons to be registered should be placed on the i-Button sensor one by one as shown in 2.

※ You can register up to Ten(10) i-Buttons.

※ If the i-Button contact time is more than six seconds, then only the previously registered i-Buttons will be stored and the registration mode will be finished.

(4) Press the [SET] button(inner device): Registration mode is over.

After registering all the i-Buttons, press the [SET] button and then you will hear the 'tictictictic' sound and the registration mode will be over.

2) Register or change password

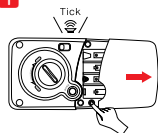
You can use 4 to 14 digits in your password.



Caution

1. When registering password or changing it, the door may get closed accidentally.
Please, make sure to completely open the door before proceeding.
2. The default factory setting password is "1234" and for your safety, please, change it before using it.

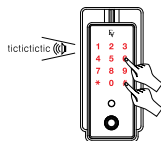
1



- (1) Press the [SET] button(inner device) : Enter registration mode.

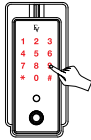
Open the battery cover of inner device, and press the [SET] button. Then, you will hear the 'ticking' sound and the numerical pad's lamp will be illuminated.

2



- (2) Enter the new password(outdoor)

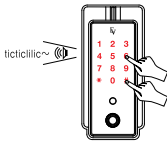
After entering the new password(4 to 14 digits) touch the "#" button, You will hear the "tictictictic" sound and your registration of password will be completed.



3) Open the door from the outside using password

(1) Enter password

If you touch any button on the numerical pad, it will be illuminated. At this moment, you can enter your password and touch the “#” button. You will hear the “tictillilic” sound and the locking condition will be released.



Caution

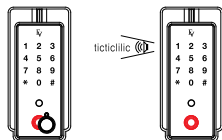
- ▶ If you enter unregistered passwords for five(5) times in a row, the system will enter the locking mode and will be halted for three(3) minutes.
- ▶ In this case, you can use registered i-Button or wait until 3 minutes then enter correct password.

(2) Open the door and get inside

After the locking mode be released, you can open the door.

4) Open the door from the outside using an i-Button

As you contact the i-Button sensor with i-Button, you will hear the “ticticlllic” sound and the locking mode will be released.



Caution

- ▶ If you use unregistered i-Button for five(5) times in a row, the system will enter the locking mode and will be halted for three(3) minutes.
- ▶ In this case, you can use password or wait until 3 minutes then contact the i-Button again.



5) Open the door from the inside

1) Open the door electronically.

Press the [OPEN/CLOSE] button on the main body located on the inner device. You will hear the ‘ticticlllic’ sound and now you can get out.

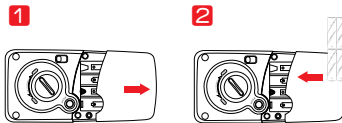
2) Open the door manually.

Turn the Hand-Operated Locking device to the ‘open’ direction. Then, the locking condition will be released and now you can get out.

※ Caution : You must be fully aware of the method for manually opening the door. In addition, let other members of your house or organization to know how to use it.

6. Mandatory functions of the equipment

※ These are the main functions that users should be fully aware of. If you are not, then it may cause injuries or damages your property.



1) Replace the battery

If you hear the “ticlling” sound when you open or close the door using password or i-Buttons, then it means that the battery should be replaced.



Caution

- ▶ Within one week after you hear the warning sound, you should replace all the four batteries with new ones.
- ▶ If you keep using the equipment without replacing the batteries, it will stop working.

(1) Open the cover of the main body located inside

After gently pressing on the battery cover and then push the cover to the side.

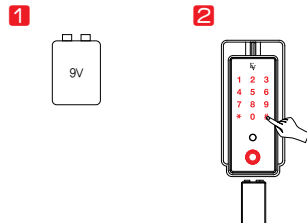
(2) Replace the battery

After replacing the batteries, please carefully check whether you hear the ‘ticllic’ sound.



Caution

- ▶ Do not reverse the polarities of the batteries. The door lock may not work properly.
- ▶ If there is liquid coming out of the battery, then it may damage the product. Check your battery periodically (once every six month).



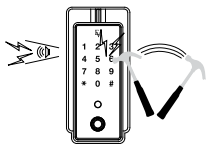
2) How to use the emergency battery

If your battery is exhausted and thus the door does not open, then you may use the emergency battery to open the door.

(1) Prepare a rectangular 9V battery for emergency

(2) Open the door using an emergency battery

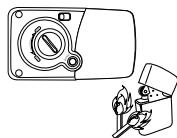
Contact the external power supply terminal on the bottom of outside with your 9V battery. Meanwhile, place your i-Button on the sensor or use password to open the door.



3) Invasion/damage alarm function

If someone forcefully attempts to open the door from either inside or outside, an alarm sound will be generated.

The alarm sound for invasion or damages will continue for One(1) minute or until the alarm is cleared. In order to clear this alarm, you must enter password or use registered i-Buttons.

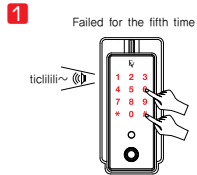


4) Fire detection function

It automatically detects the indoor temperature. If the temperature is around 60°C or 140°F, then an alarm sound will be generated and the locking condition will be automatically released.

Reference

- ▶ It is activated by heat with around 60°C or 140°F. It may vary depending on the environment.
- ▶ Even if it is forced to be locked either internally or externally, once high temperature heat is detected, the locking condition will be released automatically.
- ▶ In this case, it is not locked by the [OPEN/CLOSE] button on inner device.
- ▶ It only operates when the internal temperature is high. It is not affected by the external temperature.

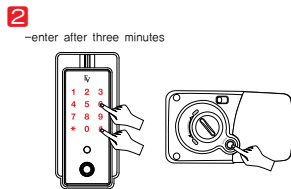


5) Forced locking of the system

If you failed to enter the correct passwords or use valid i-Buttons for five times in a row, you will hear the 'ticllllll' sound for about 10 seconds. And, the system will enter the locking mode and will be halted for three(3) minutes.

If you failed by password, the password function will be halted.

If you failed by i-Button, i-Button function will be halted.



In this case, for clear alarm press the [OPEN/CLOSE] button of inner device or use non halted function.

6) How to do when lost a registered i-Button

- All the remaining i-Button should be reregistered in order to prevent someone from using the lost i-Button on his own.

7. Additional information useful for user

1) Automatic/manual locking setting

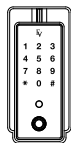
※ The default factory setting and the basic setting for installation are in automatic locking mode.

Automatic locking mode : If you close the door, then it will be automatically locked within three seconds.

Manual locking mode : Even if you close the door, it won't be automatically locked. To lock the door, you should touch the “#” button on the outer device or press the [OPEN/CLOSE] button on the inside.

Automatic locking mode Manual locking mode

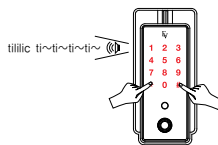
Locked within three seconds



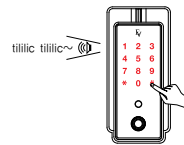
If you want to set automatic locking or manual locking mode, press [set] button of inner device then touch the “*” or “#” button on the outer device.

- ▶ You will hear “tillic ti~ti~ti~ti~” sound when it changed to automatic locking mode.
- ▶ You will hear “tillic tillic” sound when it changed to manual locking mode.

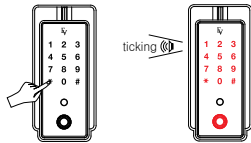
Automatic locking mode



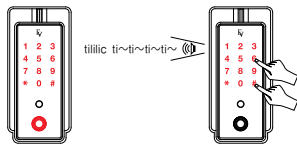
Manual locking mode



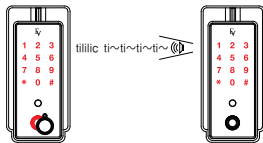
Entering the setting mode



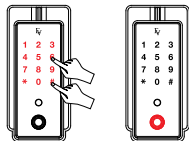
Setting with password



Setting with an i-Button



Deactivating the antitheft function



2) Antitheft function(Outdoor forced locking function)

This function is used to prevent illegal entry from the outside when you away from your home. Even if you press the [OPEN/CLOSE] button on the inside, the locking function can't be released.

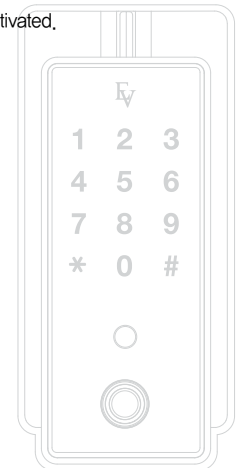
(1) Antitheft setting

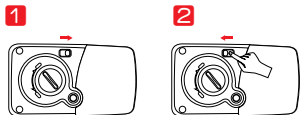
Press the "*" button for about three(3) seconds while the door is locked. You will hear the "tick" sound and the numerical pad will be illuminated.

- ▶ Setting with password : If you enter password and press the "#" button, then you will hear the "tilling ti~ti~ti~ti" sound and the antitheft function will be activated.
- ▶ Setting with i-Button : place a registered i-Button to contact the i-Button sensor. You will hear the "tilling ti~ti~ti~ti" sound and the antitheft function will be activated.

(2) Deactivate antitheft function

- ▶ Open the door using your password or registered i-Button, It will be automatically deactivated.





3) Double locking function(Indoor forced locking)

This function is used to forcefully lock the door from the inside, so that no one can release the locking condition from the outside.

(1) Double locking setting

While the door is closed, you can shift the indoor double locking switch to the locking mode.(show red color)

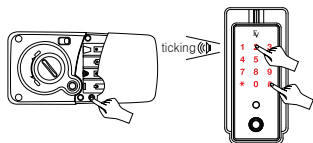
(2) Release double locking

It shifts the double locking switch to the open mode.(show green color)



Caution

If you set the double locking function, then you may not be able to open the door from the outside. So please be careful. Especially, do not allow your children to operate this function.



4) Volume control

This function is used to control the audio volume generated by Everlock.

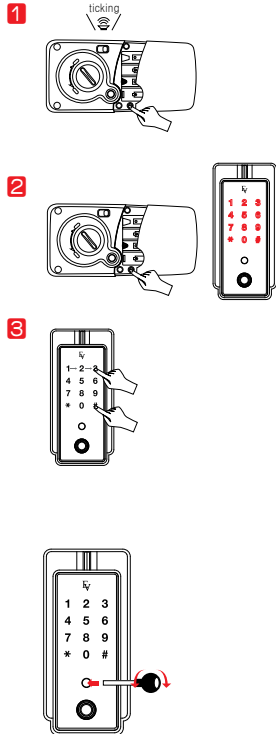
■ If you press the [SET] button on the inner device, you will hear the 'ticking' sound and the numerical pad will be illuminated. At this moment, select from 0 to 2 and then touch the "#" button to complete your audio volume setting.

※ The default factory setting and the basic setting for installation are in level 1.

▷ Etiquette mode : 0

▷ Low mode : 1

▷ High mode : 2



5) Initialization method

This function is used to initialize all the registered information to its factory setting. Once you initialize it, the password will be set to 1234 and the all the registered i-Button information will be deleted.

Reference

▶ After initializing the registered information, please register again your i-Button and password.

- (1) If you press the [SET] button shortly on the inner device, then you will hear the 'ticking' sound and the numerical pad will be illuminated.
- (2) Press [set] button for three(3) seconds again, then the numerical pad LED will be illuminated by twinkle.
- (3) If you touch "123#", initialization will be completed.

6) Using emergency cylinder keys

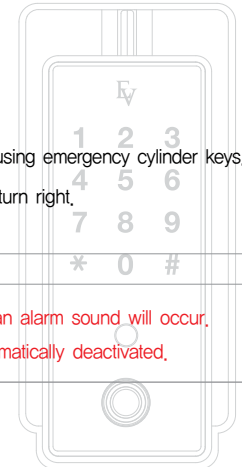
In case of broken down or battery exhausted of EVERLOCK, you can open the locked door by using emergency cylinder keys.

- (1) How to use : Remove the key hole cover(Outdoor) and insert the keys to the key hole then turn right.



Caution

- ▶ Use only emergency case. When set antitheft function, the door open by cylinder keys an alarm sound will occur.
- ▶ When Enter the password or contact to registered i-Button the alarm sound will be automatically deactivated.



8. Contact Us

Headquarters & Factory

169-1, Jubuk-ri, Yangji-myeon, Cheoin-gu, Yongin-si, Gyeonggi-do, KOREA 449-822
TEL +82-31-337-1203 | FAX +82-31-337-1209
www.bnbsol.com

Seoul R&DB Center

E&C Venture Dream Tower VI 808, 197-28, Guro-dong, Guro-gu, Seoul, KOREA 152-050
TEL +82-2-801-0199 | FAX +82-2-801-0299
www.bnbsol.com

Technical support : techsupport@bnbsol.com

Sales & marketing : sales@bnbsol.com

Limited Warranty Coverage

If your product does not work properly because of a defect in materials or workmanship, BNB Solutions will, for the length of one (1) year, which starts with the date of original purchase ("Limited Warranty Period"), at its option either (a) repair your product with new or refurbished parts, or (b) replace it with a new or refurbished product. Defective products must be shipped at the consumers cost to BNB Solutions Co., Ltd.

The forgoing warranty shall not apply to defects resulting from abuse, misuse, accident alternation, neglect, use of unregistered parts, unauthorized repair or installation, or natural disaster, such as lightning, fire, strong winds, flooding, etc. BNB Solutions shall have the right of final determination as to the existence and cause of the defect.

THE WARRANTY SET FORTH ABOVE IS EXCLUSIVE AND NO OTHER WARRANTY, WHETHER WRITTEN OR ORAL IS EXPRESSED OR IMPLIED. BNB SOLUTIONS SPECIFICALLY DISCLAIMS ANY IMPLIED WARRANTIES OF MERCHANTABILITY AND FITNESS FOR A PARTICULAR PURPOSE.

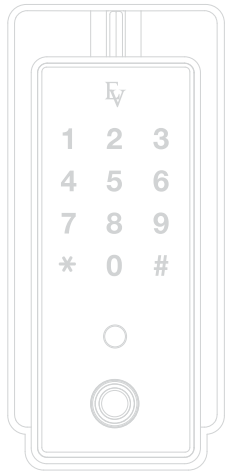
In no event shall BNB Solutions Co., Ltd. be liable for direct, indirect, special, incidental or consequential damages, (including loss of profits) whether based on contract, tort, or any legal theory. If you think you product needs servicing, please contact BNB Solutions customer service center.

MEMO



A series of 20 horizontal dotted lines for taking notes.

MEMO



A series of horizontal dotted lines for writing a memo.





Product warranty

Product name		Everlock		
Model name		BDS-232		
Date of purchase		Year	Month	Day
Customer	Name			
	Telephone			
	Address			
Agent (Sales)	Name			
	Telephone			
	Address			

The warranty period ("Limited Warranty Period") expires one(1) year after the date of purchase.

- If you want to receive good A/S, then you should submit the product warranty specifying the date of purchase, within the period of warranty.
- This product warranty can't be issued again. Please, keep it safely along with the user's manual.
- The free warranty period expires one year after the date of purchase.
- If your negligence or carelessness has caused defects, or if the warranty period has expired, then you will be charged for A/S.
- If you discover some defects with the product, please contact your installer or our main office.

BNB Solutions Co., Ltd.

BNB
Better & Best Solutions

Create the Best Value with Advanced Products.

