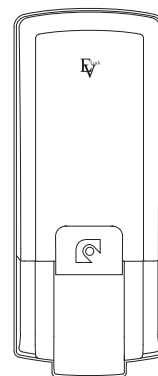


EVERLOCK

User's manual

BDS-222



- ▶ Comfortable and designed by modern sliding type
- ▶ Fire detection alarm sounds and automatic release of the locking device
- ▶ Automatic locking function
- ▶ Antitheft and double locking
- ▶ Override emergency cylinder keys

Warning : In case of emergency, you should be fully aware of the method for using the manual shutting device.

Please, get a copy of product warranty from the installer.

If the product warranty is not clearly specified, then you may be exposed to some disadvantages in case of needs for A/S.

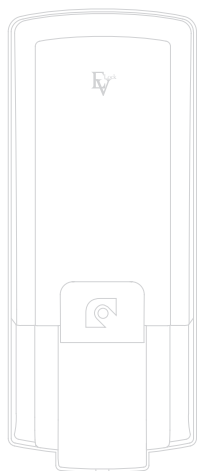
※ This product's performance and design are subject to change without prior notice for the purpose of quality improvement.

■ Summary of the methods for using the product

Functions	How to operate it			Remarks
	Entering the menu	Detailed procedures	Ending the menu	
Basic Functions				
Registering fingerprint	[SET]	password # + fingerprint 1 + fingerprint 2 + ...	[SET]	You can register up to ninety-nine (99). Delete all
Delete fingerprint	[SET] for 3 seconds	password + #	—	
Register password	[SET]	Current password# + new password#	—	
Open the door from the outside	Open numeric pad cover + password + # or Open fingerprint cover + Fingerprint authentication			Password type or Fingerprint type
Mandatory functions				
Low battery alarm	If you open the outer cover or press [open/close] button on the inner device, you will hear the 'tillitic' sound giving you warning.			
Impulsive intrusion alarm function	Alarm sounds will be on for two(2) minutes in case of impulsive intrusion or damaged systems.			
Forced locking of the system	If you enter wrong password or fingerprint information for five time, the system will be halted for three minutes.			
Additional functions, very useful for you				
Initialization	[SET]	123 + #	—	
Volume control	[SET]	Select one number from 0 to 2 + #	—	
Automatic/manual locking	[SET]	* + #		Automatic ↔ Manual
Antitheft function setting	# for 3 seconds # for 3 seconds	Password + # or Fingerprint authentication	— —	Password type or Fingerprint type
Double locking	Shifts the internal double locking switch to locked mode. (show red color)			

■ Table of contents

1. Cautions for use	4
2. Product features	6
3. Product specifications and its components	7
4. Name of each part	8
5. How to enter fingerprints	9
6. Using the general function	10
1) Register fingerprint 2) Delete fingerprint 3) Register and change password	
4) Open the door from the outside using password 5) Open the door from the outside using a fingerprint	
6) Open the door from the inside	
7. Mandatory functions of the equipment	14
1) Replace batteries 2) How to use the emergency battery	
3) Intrusion/damage alarm function 4) Fire detection function	
5) Forced locking of the system	
8. Additional information useful for you	16
1) Auto/manual locking setting 2) Anti-theft function(Outdoor forced locking)	
3) Double locking function(Inside forced locking) 4) Volume control 5) Initialization 6) Reset	
7) Using emergency cylinder keys	
9. Contact us	20



1. Cautions for use

- ▶ Get a copy of product warranty with accurate specifications from the installer.
- ▶ Please, ask the installer to teach you how to use the product,
- ▶ Be fully familiarized with functions,
- ▶ This product is designed to maintain its locking condition despite 30,000[V] electrical shocks.

This information aims to maintain the safety of our users and prevent any damages on property or inconvenience.
Read it carefully for your correct use of the product,



Warning

If this sign is violated, a user may experience severe injury or even die.



Caution

If this sign is violated, it may cause injury to the user or property damages.



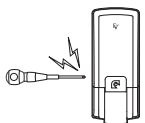
Attention

This sign asks for you to pay attention.



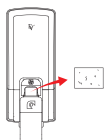
Prohibited

This sign signifies prohibited actions.



● Do not disassemble the product.

This product's inner area is designed in a precise and complex way. Do not disassemble it on your own. It may lead to serious malfunctions.

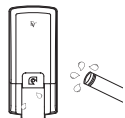


● Do not allow alien substances to get smudged over the fingerprint input window.



● Do not apply impacts to it.

It may cause malfunctions or defective operation.



● Do not spray water to the product. Do not install it in a humid place.

Everlock is not either water or vibration free. It may cause malfunctions due to short-circuits in the product.



● If the door has a hole for milk delivery or any other type of hole, then please block it completely.

It is possible to manipulate the door lock through the hole and to make illegal entry.



- Do not forget to replace the battery when necessary.

When the low battery alarm or display is on, then please replace it with a new one within one week after that.

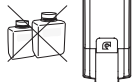


- If you move to another address and require new installation, please contact your installer.
(Additional costs may accrue for new installation)



- Please, pay close attention to your password at all times.

Your password must set and changed periodically.

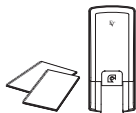


- Do not use water, benzene or alcohol to clean the product.

It may lead to malfunctions of the electronic product. You are advised to wipe it off gently with a dry cloth.



- While opening and closing the cover, be careful not to let your finger to get stuck.



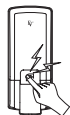
- You must read the user's manual carefully to operate the product properly.

Otherwise, it may lead to malfunctions or poor performance.



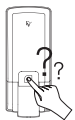
- Do not approach flammable substance such as a lighter to the product.

It may lead to malfunctions or poor performance.



- Do not press the button too hard or apply excessive forces to manipulate the equipment.

It may lead to malfunctions.



- It may not be able to detect a certain type of fingerprint or a child's fingerprint. Also, the detection rate may vary depending on the season or environment.

2. Product features

► Comfortable and modern sliding type of design

We have adopted a sliding type of cover to reflect users' convenience and our well polished noble design will enhance the user dignity to one level higher.

► Fire detection alarm sounds and automatic release of the locking device

It includes the fire detection alarm function. If heat above 60 degrees Celsius is detected, then the alarm sound will be generated and the doorlock will automatically release the locking function.

► Automatic locking function

It is automatically locked after you close the door. You will never leave your home without locking the door.

► Antitheft and double locking

If you set the double locking function when you are inside, then no one can open the door from the outside. To the contrary, if you set the antitheft function from the outside, an alarm sound will occur as they open the door from the inside.

► Audio volume control

In consideration of inconvenience with noises generated when Everlock is used, we allow you to freely select the desirable audio volume.

► Override emergency cylinder keys

Use can use an override cylinder keys in case of a circuit trouble.

3. Product specifications and its components

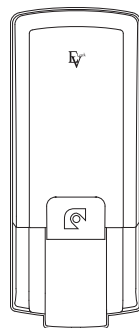
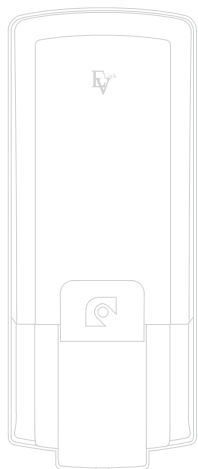
1) Product specifications

Classifications	Specifications		Remarks
Sizes	Inner device (mm)	90(W) × 157(H) × 37(D)	
	Outer device (mm)	73(W) × 175(L) × 35(H)	
Material	Inner device	Aluminum, Zinc, ABS	
	Outer device	Aluminum diecasting	
Temperature of use	-15 ~ 55°C		
Voltage of use	Rated voltage 6V (4 units of 1.5V AA type alkaline batteries)		If used 10 times/day, then it can last for one year

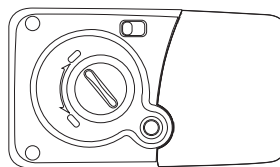
※※The battery's life cycle may vary depending on temperatures, humidity, the number of use and the quality of the battery itself.

2) Components

When you have purchased the product, make sure to check whether all the necessary components are included in the package.



► Outer device



► Inner device

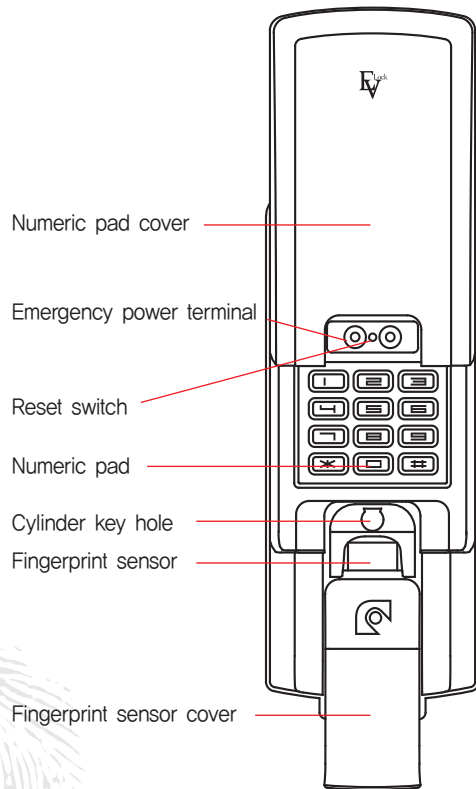


► User's manual
(including the product warranty)
and installation template

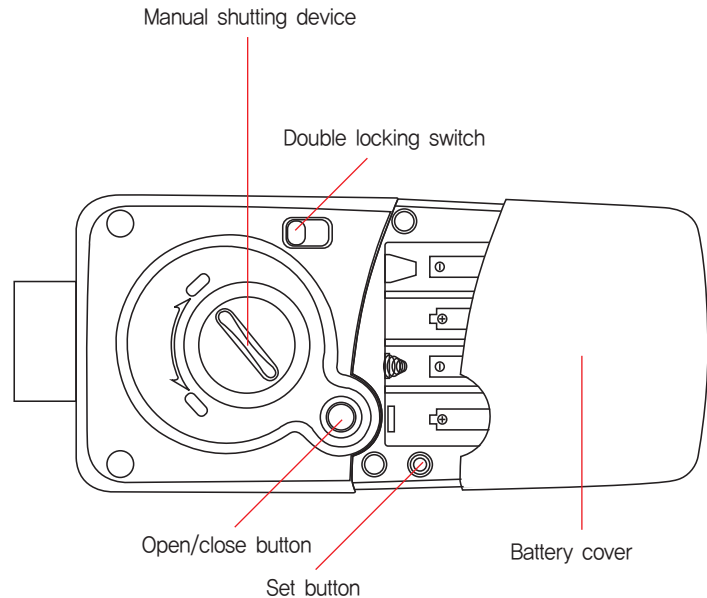
- Latch
- 4 units of AA batteries
- Screw envelopes
- 2 units of emergency keys



4. Name of each part



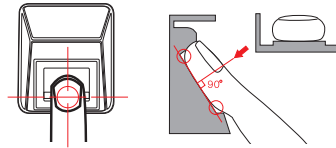
Outer device



Inner device

5. How to enter fingerprints.

1) Correct way to enter fingerprints

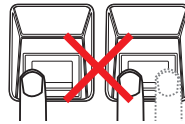


When entering your fingerprint, do not press it too hard or soft. Place your finger right in the center of the fingerprint input window.

2) Incorrect way to enter fingerprints



– Do not move your fingers,



– Do not place your fingers in the corner,



– Do not slant your fingers,



– Do not allow your fingers to move away from the surface of the input window,

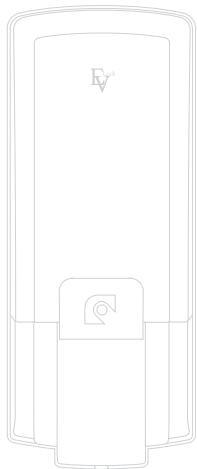


– Do not allow your fingers to leave the edge of the input window,



Cautions

- ▶ It may not be able to detect a certain type of fingerprint or a child's fingerprint. Also, the detection rate may vary depending on the season or environment.
- ▶ As a child grows, his or her fingerprints tend to change. In that case, please reregister fingerprints.



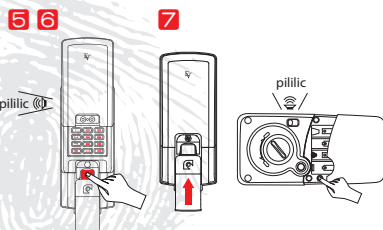
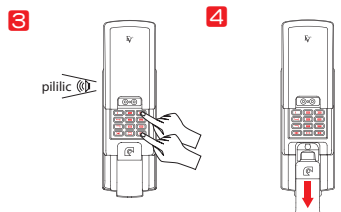
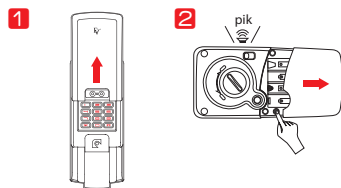
6. Using the general function

1) Register fingerprint

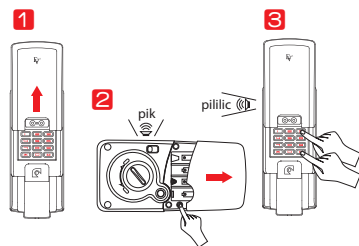


Caution

- ▶ When registering a fingerprint or checking registration, the door may get closed accidentally. Please, make sure to completely open the door before proceeding.
- ▶ Please, remove all the alien substances on the input window.



- (1) Open the cover of the numerical pad.
Lift up the numerical pad located outer device.
- (2) Press the [SET] button(indoor) : Enter registration mode.
Open the battery cover located inner device and press the [SET] button. You will hear the 'pikk' sound as the numerical pad is illuminated.
- (3) Enter the password(Outdoor) : Authenticate your password.
After entering your password, press the # button. You will hear the 'pililic' sound as the blue light will be off and on in the numerical pad.
- (4) Open the fingerprint sensor's cover(Outdoor)
Push down the fingerprint sensor's cover and then the fingerprint input window will be illuminated.
- (5) Register your fingerprints (Outdoor)
Wait for about five(5) seconds after placing your finger on the fingerprint input window. You will hear the 'pililic' sound and the blue light will start blinking. Your fingerprint registration is now completed.
※ Do not move your finger until you hear the 'pililic' sound.
※ If the red light starts blinking with the 'pipik' sound, then it means that your fingerprint registration is not successfully finished. In this again, place your finger on the fingerprint input window and reregister it.
- (6) Continuous registration of fingerprints
As shown in 5), register fingerprints one by one by placing them on the input window.
※ You may register up to 99 fingerprints.
※ If 10 seconds of the standby time for fingerprint input are passed, the registration mode will be over while the previously registered fingerprints are saved.
- (7) Close the fingerprint sensor's cover or press the [SET] button, : Finishing the registration mode.
After registering all your fingerprints, lift up the fingerprint sensor's cover or press the [SET] button located inner device. You will hear the 'pililic' sound signifying that the registration mode is now completed.



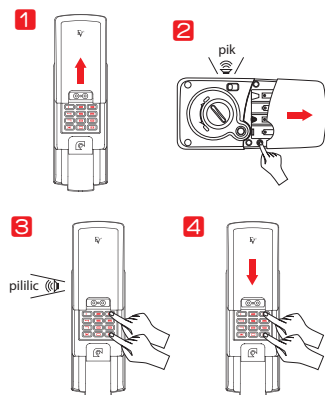
2) Delete fingerprints



Cautions

- ▶ When setting the functions, the door may get closed accidentally. Please, make sure to completely open the door before proceeding.

- (1) Open up the cover of the numerical pad.
Lift up the numerical pad located outer device.
- (2) Press the [SET] button for a long time(indoor) : Enter the fingerprint delete mode.
Open the batter cover located inner device and the press the [SET] button for a long time until the blue light is shown on the numerical pad.
- (3) Enter password(outdoor) : Delete all the registered fingerprints
Press the # button after entering the password. You will hear the 'pililic' sound and then the numerical pad will blink in blue twice. All the registered fingerprints will now be deleted.
※ You may only use the delete-all option for the fingerprints registered.



3) Register and change the password

Your password should be a 4~12 digits number.

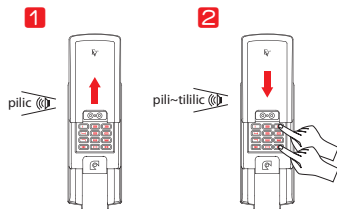


Caution

- ▶ When registering password or changing it, the door may get closed accidentally. Please, make sure to completely open the door before proceeding.
- ▶ The default factory setting for the password is "1234" and for your safety, please, change it before using it.

- (1) Open up the cover of the numerical pad.
Lift up the numerical pad's cover located outer device.
- (2) Press the [SET] button for a long time(indoor) : Enter the registration mode.
Open the battery cover located inner device and press the [SET] button for a short period of time.
You will hear the 'pick' sound.
- (3) Enter the current password(outdoor) : Authenticate your password.
Press the # button after entering all the passwords. You will hear the 'pililic' sound and then the blue light will be off and on in the numerical pad.
- (4) Enter new password and press the # button
After entering new password(4~12 digits), push down the numerical pad' s cover or press the # button. You will hear the 'pililic' sound and your password changes is now completed.

4) Open the door from the outside using password.



(1) Lift up the numerical pad's cover (Outdoor)

Lift up the numerical pad's cover located outer device. Then you will hear the 'piliic' sound and the blue light will be shown on the numerical pad.

(2) After entering your password, press the # button or push down the numerical pad's cover.

After entering registered password, press the # button or push down the numerical pad's cover.

You will hear the 'pili~tillilic' sound and the locking condition will be released. Now you can go through the door.

※ If you have entered incorrect passwords, then press the * button.

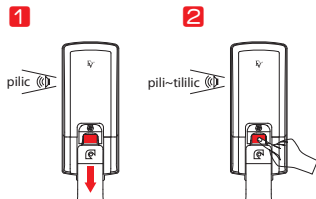
All the previous entries will be canceled and you can restart entering desirable numbers.

※ If an error has occurred because you have pressed the # button after entering incorrect password, then please press the # button again to restart your input of password.



Caution

► If you enter unregistered password for five times in a row, you will enter into the forced locking mode.
The system will be halted for three minutes.



5) Open the door from the outside using a fingerprint

- (1) Open the fingerprint sensor's cover. (Outdoor)

Push down the fingerprint sensor's cover located outer device.

You will hear the 'pi-lic' sound and the fingerprint input window will be illuminated.

- (2) Enter your registered fingerprint in the fingerprint input window

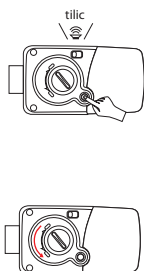
Wait for about one second after placing your finger on the fingerprint input window (until you hear the 'tik' sound).

You will hear the 'pi-li~ti-lic' sound as the locking condition is released. Now you can go through the door.



Caution

- ▶ If your finger is too dry or it has alien substances on it, then the fingerprint detection rate is likely to be poor. In this case, blow your breath onto the finger or remove the alien substances to improve the poor detection rate.
- ▶ If you enter unregistered fingerprint for five times in a row, you will enter into the forced locking mode. The system will be halted for three minutes.



6) Open the door from the inside

- (1) Open the door electronically

Press the [open/close] button located inner device. You will hear the 'ti-lic' sound and the locking condition will be released. Now, you can go through the door.

- (2) Open the door using a manual switch

Turn the manual switch to the 'open' position. The locking condition will be released and now you can go through the door.

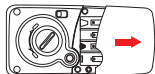
Caution) In case of emergency, you should be fully aware of the method for manually opening the door.

Please, inform other members of your family or company of such a method.

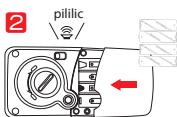
7. Mandatory functions of the equipment

※ These are the main functions that users should be fully aware of. If you are not, then it may cause injuries or damages your property.

1



2



1) Replace the battery

If you hear the 'tillilik' sound when you open the fingerprint sensor's cover or the numerical pad's cover or when you press the open/close button, then it means that you must replace the battery with a new one.



Caution

- ▶ Within one week after you hear the warning sound, you should replace all the four batteries with new ones.
- ▶ If you keep using the equipment without replacing the batteries, it will stop working.

(1) Open the cover of the main body located inside
Push the battery cover to arrow direction,

(2) Replace the battery
After replacing the batteries, please carefully check whether you hear the 'tillilik' sound.



Caution

- ▶ Do not reverse the polarities of the batteries. The door lock may not work properly.
- ▶ If there is liquid coming out of the battery, then it may damage the product.
Check your battery periodically (once every six month).

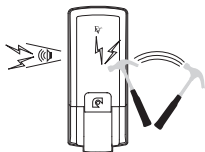
2) How to use the emergency battery

If your battery is used up and thus the door does not open, then you may use the emergency battery to open the door.

(1) Prepare a rectangular 9V battery for emergency.

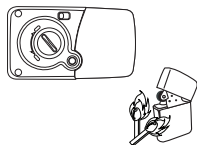
(2) Open the door using an emergency battery

Lift up the numerical pad's cover, contact the external power supply terminal on the outside with your 9[V] battery. Meanwhile, enter your password or use your registered fingerprint.



3) Invasion/damage alarm function

If someone forcefully attempts to open the door from either inside or outside, an alarm sound will be generated. The alarm sound for invasion or damages will continue for two(2) minutes or until the alarm is cleared. In order to clear this alarm, you must enter password or use registered cards.

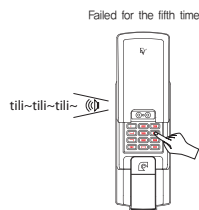


4) Fire detection function

It automatically detects the indoor temperature. If the temperature is around 60°C, then an alarm sound will be generated and the locking condition will be automatically released.

Reference

- ▶ It is activated by heat with around 60°C. It may vary depending on the environment. Even if it is forced to be locked either internally or externally, once high temperature heat is detected, the locking condition will be released automatically.
- ▶ Even if you press the [OPEN/CLOSE] button, the door won't get locked again.
- ▶ If you open the door, the alarm sound will be automatically released. If you close it again while the temperature condition has not dropped yet, then the alarm sound will occur and the door will not get locked.
- ▶ It only operates when the internal temperature is high. It is not affected by the external temperature.



5) Forced locking of the system

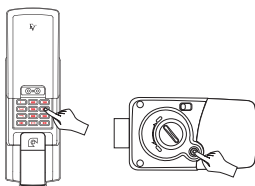
If you failed to enter correct passwords or use valid fingerprints for five times in a row, you will hear the 'titi~titi~titi~' sound. And, the system will enter the locking mode and will be halted for three(3) minutes.

There is no way other way to clear the alarm from the outside other than waiting for three minutes. From the inside, you can simply press the [OPEN] button to clear the alarm.

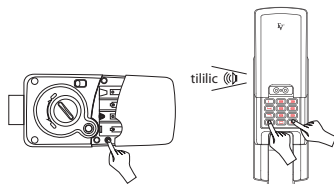
Reference

- ▶ Everlock always remembers how many times you failed. Even if there is a long elapsed time between each try, it will enter the forced locking mode as you failed for the fifth time.
- But, even if you failed for four times, as you succeed in opening the door or the system enters into the forced locking mode, then the number of failures will be automatically cleared.

Re-enter after three minutes



8. Additional functions useful for users



1) Automatic/manual locking setting

Auto locking : The door is automatically locked within 3 seconds after it is closed.

Manual locking : The door will not get locked automatically even if you close it. If you want to lock it, you must open and close the numerical pad's cover or the fingerprints sensor's cover from the outside or press the [OPEN/ CLOSE] button from the inside.

Lift up the numerical pad's cover, pressing the [SET] button located inner device, press * and then #.

Your auto or manual mode setting is completed.

- ▷ As you switch to auto locking mode, you will hear the 'tillik' sound and the numerical pad will start blinking in blue.
- ▷ As you switch to manual locking mode, you will hear the 'titi' sound and the numerical pad will start blinking in blue rapidly.

Reference

- The factory setting or the basic setting for initialization is in auto locking mode.

2) Antitheft function (Outdoor forced locking function)

This function is used to prevent illegal entry from the outside when you are away from your home. Even if you press the [OP/CL] button on the inside, the locking function can't be released. Even if you restart the equipment by removing and replacing the battery, the same setting will remain effective.

※ It can manually open the door from the inside by turning the manual switch. However, in that case, an alarm sound will be on for two(2) minutes.

(1) Antitheft setting

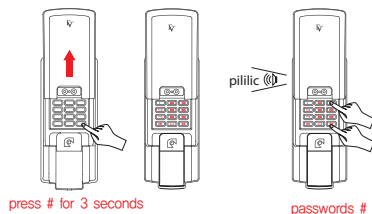
▷ Setting with passwords : While the door is locked, lift up the numerical pad's cover and press the # button for three seconds. The numerical pad's light will be off and on automatically. At this time, enter password and press the # button. You will hear the 'piliik' sound and the antitheft function will be set.

▷ Setting with fingerprints : While the door is locked, lift up the numerical pad's cover and press the # button for three seconds. The numerical pad's light will be off and on automatically. At this time, push down the fingerprint sensor's cover and enter registered fingerprints. You will hear the 'piliik' sound and the antitheft function will be set.

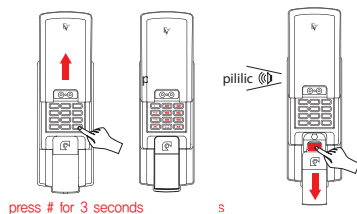
(2) Deactivate antitheft function

▷ Open the door using your password or registered fingerprint. It will be automatically deactivated.

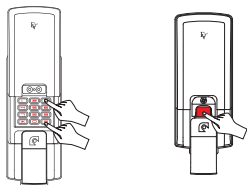
Setting with password



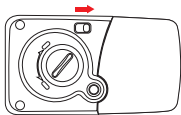
Setting with a fingerprint



Deactivating the antitheft function

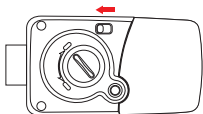


1



Double locking setting

2



Release double locking

3) Double locking function(Indoor forced locking)

This function is used to forcefully lock the door from the inside, so that no one can release the locking condition from the outside.

(1) Double locking setting

While the door is closed, you can shift the indoor double locking switch to the locking mode.

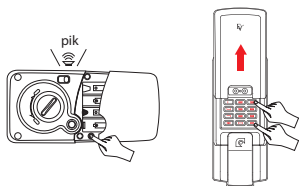
(2) Release double locking

It shifts the double locking switch to the open mode. Show green color.



Caution

- ▶ If you press the [OP/CL] button while the door is in double locking mode, you will just hear the 'ticking' sound and the door will not open.
- ▶ In double locking mode, even if you close the door, you will just hear the 'dido dido dido' sound giving you a warning but the door won't get locked.
- ▶ If you set the double locking functions, then it will be impossible to open the door from the outside. So, please, be careful. Especially, do not allow your children to play with this function.



4) Volume control

This function is used to control the audio volume generated by Everlock.

- (1) Lift up the numerical pad's cover, press the [SET] button located inner device, then you will hear the 'tik' sound. Select 0~2 on the numerical pad and press the # button. The audio volume setting will be now completed.

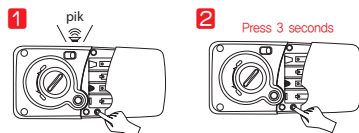
※ Even if you select the etiquette (mute) mode, you will hear alarms sounds from the equipment.

※ The default factory setting and the basic setting for installation are in level 2.

▷ Etiquette mode : 0

▷ Low mode : 1

▷ High mode : 2

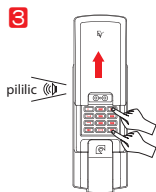


5) Initialization

It deletes all the registered information (password, fingerprints). If you initialize this information, the password will be set to 1234 and all the registered fingerprints will be deleted.

Reference

- ▶ If you have initialized the registered information, then please register fingerprints and passwords again.



- (1) Lift up the numerical pad's cover, press the [SET] button located inner device.

Then you will hear the 'tik' sound as the numerical pad will be illuminated.

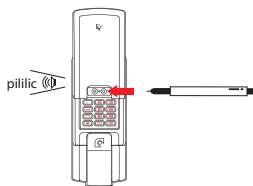
- (2) Press one more time the [SET] button for 3 seconds then the numerical pad light will be off for a while and it will be illuminated again.

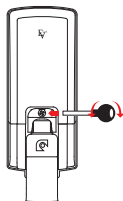
- (3) Press 123#. Then you will hear the 'pililic' sound and initialization will be completed.

6) Reset function

If the equipment does not work properly or it malfunctions, this function can be very useful.

- ▷ Lift up the numerical pad's cover and then you will find a reset switch in the small hole in the middle of the connection terminal for the emergency battery. Use a ball pen or pin to touch this reset switch. You will hear the 'pililic' sound and the reset function will be activated.





7) Using emergency cylinder keys

In case of broken down or battery exhausted of EVERLOCK, you can open the locked door by using emergency cylinder keys

(1) How to use : Open the fingerprint sensor's cover(Outdoor) and insert the keys to the key hole then turn right.



Caution

- ▶ Use only emergency case. When set antitheft function, the door open by cylinder keys an alarm sound will occur.
- ▶ When Enter the password or registered fingerprint the alarm sound will be automatically deactivated.

12. Contact Us

Headquarters & Factory

169-1, Jubuk-ri, Yangji-myeon, Cheoin-gu, Yongin-si, Gyeonggi-do, KOREA 449-822
TEL. +82-31-337-1203 | FAX, +82-31-337-1209

Seoul R&DB Center

#808, E&C Venture Dream Tower VI, 197-28, Guro-dong, Guro-gu, Seoul, KOREA 152-050
TEL +82-2-801-0199 | FAX, +82-2-801-0299

Technical support : techsupport@bnbsol.com

Sales & marketing : sales@bnbsol.com

Limited Warranty Coverage

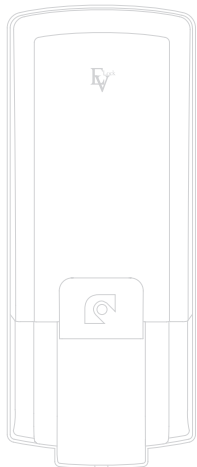
If your product does not work properly because of a defect in materials or workmanship, BNB Solutions will, for the length of one(1) year, which starts with the date of original purchase ("Limited Warranty Period"), at its option either (a) repair your product with new or refurbished parts, or (b) replace it with a new or refurbished product. Defective products must be shipped at the consumers cost to BNB Solutions Co., Ltd.

The forgoing warranty shall not apply to defects resulting from abuse, misuse, accident alternation, neglect, use of unregistered parts, unauthorized repair or installation, or natural disaster, such as lightening, fire, strong winds, flooding, etc. BNB Solutions shall have the right of final determination as to the existence and cause of the defect.

THE WARRANTY SET FORTH ABOVE IS EXCLUSIVE AND NO OTHER WARRANTY, WHETHER WRITTEN OR ORAL IS EXPRESSED OR IMPLIED. BNB SOLUTIONS SPECIFICALLY DISCLAIMS AND IMPLIED WARRANTIES OF MERCHANTABILITY AND FITNESS FOR A PARTICULAR PURPOSE.

In no event shall BNB Solutions be liable for direct, indirect, special, incidental or consequential damages, (including loss of profits) whether based on contract, tort, or any legal theory.

If you think your product needs servicing, please contact BNB Solutions customer service center.



MEMO





Product name		EVERLOCK		
Model name		BDS-222		
Date of purchase		Year	Month	Day
Customer	Name			
	Telephone			
	Address			
Agent (Sales)	Name			
	Telephone			
	Address			

The warranty period ("Limited Warranty Period") expires one(1) year after the date of purchase.

- If you want to receive good A/S, then you should submit the product warranty specifying the date of purchase, within the period of warranty.
- This product warranty can't be issued again.
Please, keep it safely along with the user's manual.
- The free warranty period expires one year after the date of purchase.
- If your negligence or carelessness has caused defects,
or if the warranty period has expired, then you will be charged for A/S.
- If you discover some defects with the product, please contact your installer or our main office.

BNB Solutions Co., Ltd.

BNB
Better & Best Solutions

Create the Best Value with Advanced Products.

Ev⁺